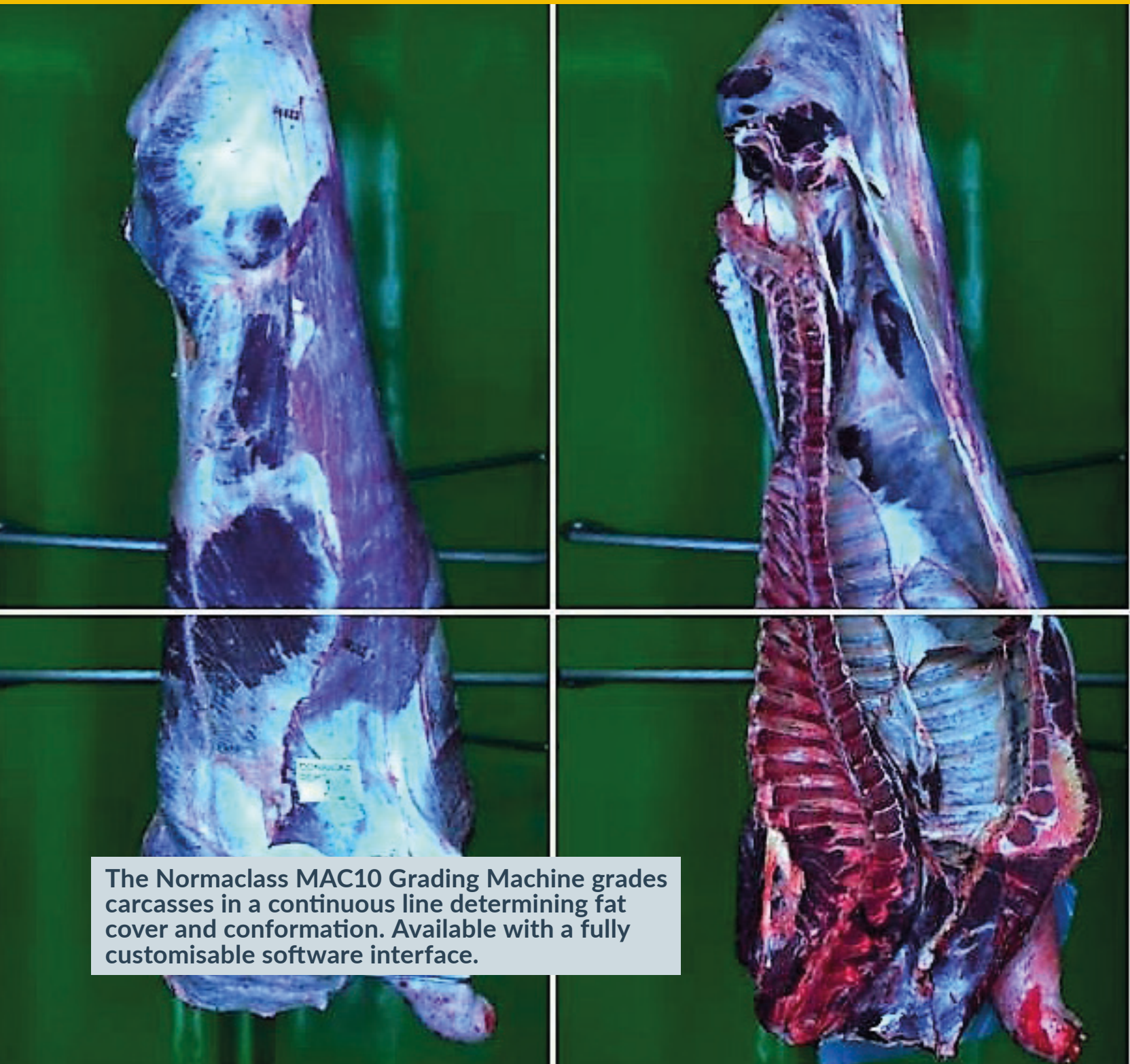


NORMACLASS MAC10 CARCASS GRADING



The Normaclass MAC10 Grading Machine grades carcasses in a continuous line determining fat cover and conformation. Available with a fully customisable software interface.

Key Advantages

MAC 10 Grading Machines

- » More than 55 carcass grading machines installed since 2002
- » Grading Conformation and Fat Cover
- » Using EUROP scale with 1/3 of classes
- » Now calibrated for INACUR scale with 1/3 of classes
- » Grading equations developed by Normaclass based on expert gradings
- » Flexible interface adapting to user constraints
- » Windows 10 64-bits
- » Connection to ERP by sockets
- » All the test and vérifications as the previous models MAC II, MACS, MACS2
- » Grading using both half-carcass with outside and inside view
- » Up to 360 carcass/hour

Installation

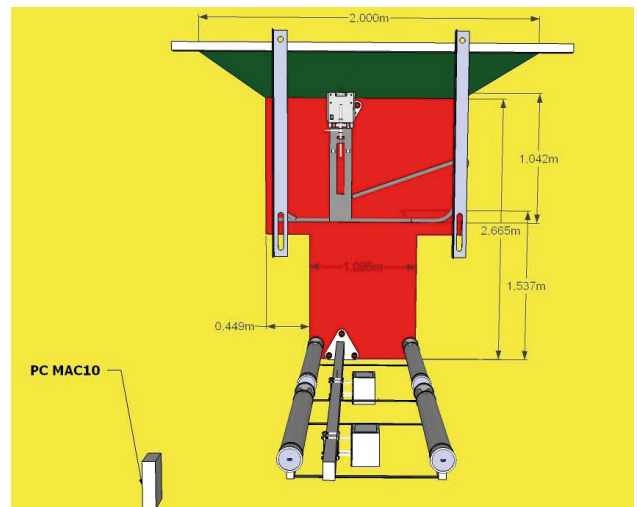
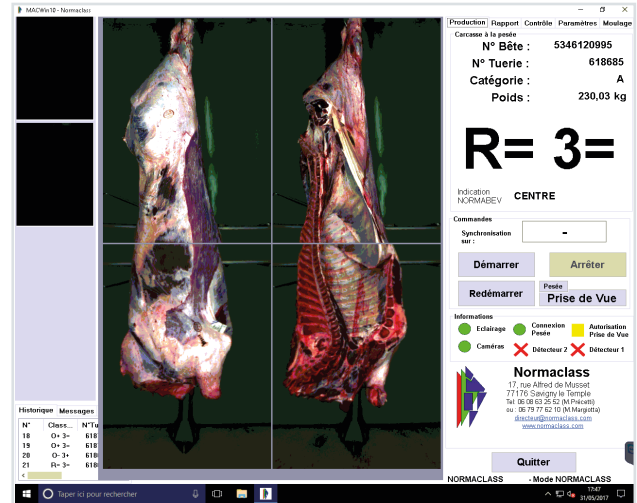
- » MAC10 works on continuous lines, no need to stop the carcass
- » Standard distance between half-carcasses (900mm minimum)
- » No obstruction under the line
- » No moving parts to simplify maintenance
- » No link with the line controls, and can work fully manual
- » In-house software development
- » Installed over 2 days without line interruptions (training and testing conducted on day 3)

Dimensions

- » Cameras at 1500mm from the line (1360mm possible)
- » Green background suspended from line structure (width 1900 to 3200mm possible)
- » Reserved floor dimensions 2800mmx1800mm
- » Needs 2000mm of line length

Quality Control

- » Daily checks
- » Statistics and images always available to quality control services
- » Several control tools
- » Images are saved and useable by the plant



scottautomation.com

