

T300 Series Option

Power

- Single Phase
- Three Phase

Compressor

- No Compressor - Customer to provide air supply
- Built-in Compressor with filter and accumulator

Table Options

- Fixed table
- Sliding table
- Custom - On request and pending evaluation

Fence Arm

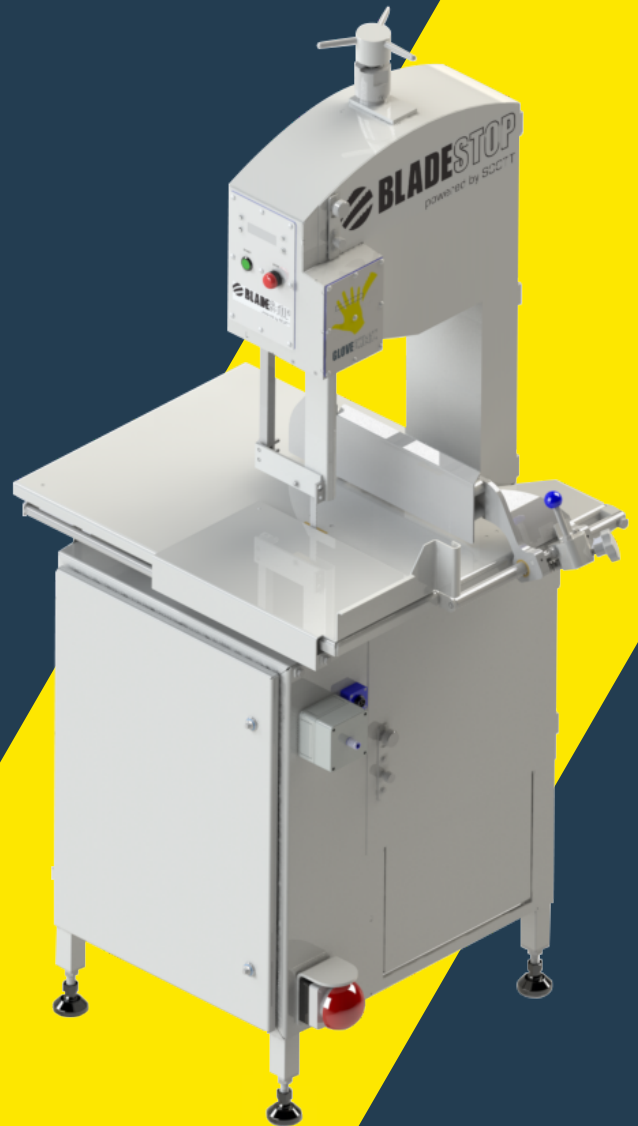
- Standard flat plate - manual slide
- Precision adjustable with graduated scale

Feet Options

- Fixed feet - standard
- Fixed feet - stainless steel
- Castor wheels for manoeuvrability

BladeStop Connect

- IOT intergration providing real-time data for efficient operations and training



STOPS FASTER. FULL STOP.

bladestop.com

bladestop@scottautomation.com

 **BLADESTOP**
powered by SCOTT

The fastest stopping time on the market—because when a limb is on the line, every millisecond counts.

MECHANICAL

Wheel Diameter	360 mm [14"]
Blade Size	5/8" x 4TPI x 3000 mm [5/8" x 4TPI x 10'10"]
Blade Speed	945-1554 m/min [3.1K-5.1K feet/min]
Shipping Weight	500 kg [1102 lbs.]
Mobility Options	Castor Wheels, Adjustable Feet

ELECTRICAL

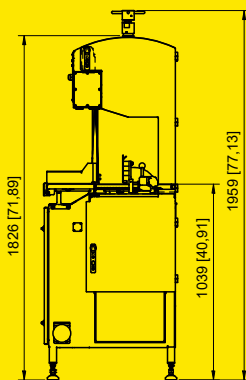
Motor Voltage - Three phase, 50/60 Hz	208-575 VAC
- Single phase, 50/60 Hz	208-250 VAC
Motor Power	2.2 KW [2.95 HP]
Motor Efficiency	Class IE 3
Full Load Current - Three phase	12.4 A/6.3 A
- Single phase	12.4 A/10.5 A
Compressor	8 Amp Single phase
Connector Type	IP 66 rated, Three phase 20 Amp IP 66 rated, Single phase 15 Amp

PNEUMATICS

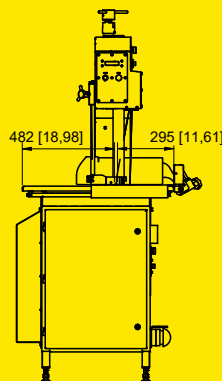
Supply Pressure	6-7.5 Bar [85-105 psi]
Flow Rate	260 L/min

DIMENSIONS

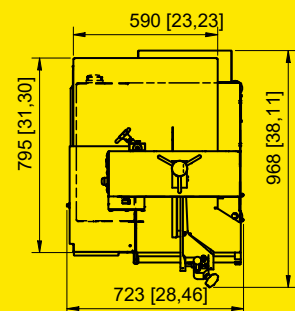
Max cut height	335 mm [1'1"]
Max throat depth	337 mm [1'1"]
Cutting stroke (front of table to blade)	295 mm [12"]
Machine Dimensions (WxDxH)	723 x 968 x 1960 mm [2'4" x 3'2" x 6'5"]
Table Dimensions (WxDxH)	590 x 795 x 1039 mm [1'11" x 2'7" x 3'5"] (Adjustable feet +/- 20mm in height [+/- 0.8"])



FRONT VIEW



SIDE VIEW



TOP VIEW